

## PC24(WT22) Air Pressure Sensor



- Piezoresistive silicon chip employed
- CE certificate
- Without temperature compensation

PC24(WT22) pressure sensor is suitable for dry and non-corrosive air measuring. It is easy for mounting with PCB. It is a solution for low cost application with low requirements.

### Medical application

- Hospital and portable ventilator
- Oxygen concentrators and O<sub>2</sub> Therapy
- Sleep apnea
- Operating room

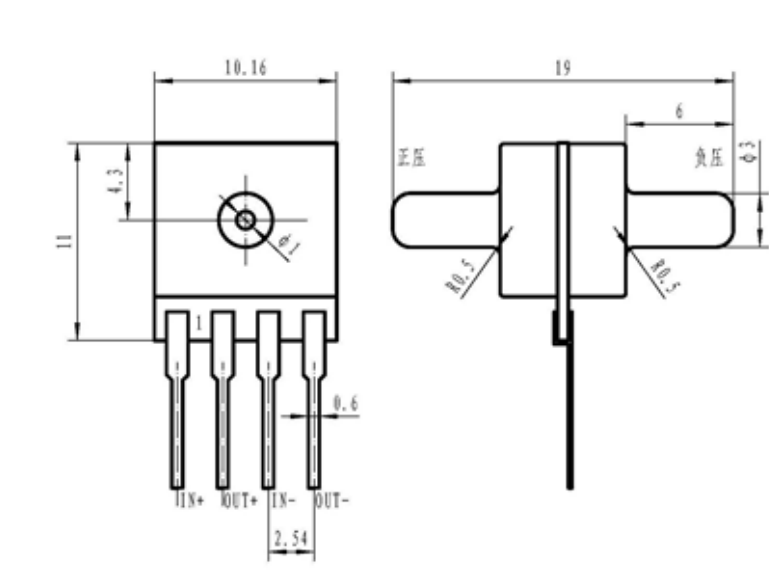
### Industrial application

- Environmental
- Technology
- Manufacturing

### HVAC application

Heating Ventilating and Air Conditioni

Pressure range			
Pressure range	100Pa, 1kPa, 2kPa, 7kPa, 10kPa, 35kPa, 70kPa, 100kPa(bar and psi unit available)		
Pressure reference	Gauge pressure   Differential pressure		
Overpressure	300%F.S.		
Output signal			
Output	≥50mV(typical)		
Specification			
Accuracy (linearity, repeatability and hysteresis)	±0.25%F.S. (Typical)		
Excitation	1.5mA (Typical)   5VDC		
Compensated temp.	Without temperature compensation		
Operating temp.	0-60°C		
Storage temp.	0-85°C		
Bridge resistance	Min.	Max.	Unit
	2600	5500	ohm
Long term stability	≤0.2%F.S./year		
Housing	Plastic		
Weight	5g(approx)		



In mm

How to order

PC24(WT22) XX—XX—XX

Pressure range

Please write directly

Pressure reference

G: gauge pressure

D: differential pressure

Excitation

C1: 1.5mA

C2: 5V

Wotian reserves the right to make changes to any product in this publication without notice. The information we supply is believed to be accurate and reliable as of this printing.

### Contact us

Nanjing Wotian Technology Co.,Ltd.  
Add: 5 Wenying Road, Binjiang Development Zone, Nanjing, 211161, China  
Sales Manager: Wuzhou Lian  
MP: 0086-13998828452  
Email: [lianwuzhou@wtsensorus.com](mailto:lianwuzhou@wtsensorus.com)

American Company  
Wotian Sensor Corporation  
Sales Manager: Geoffery Gao  
MP: 001- 626 808 1707  
E-mail: [geoffery@wtsensorus.com](mailto:geoffery@wtsensorus.com)

German Company  
Wotian Sensor GmbH  
Sales Manager: Frances  
E-mail: [frances@wtsensorus.com](mailto:frances@wtsensorus.com)

Anshan Wotian Sensor Corp. (Branch Factory)  
Add: 262, Yueling Road, Gaoxin District, Anshan, China  
Sales Manager: Wuzhou Lian  
MP: 0086-13998828452  
Email: [lianwuzhou@wtsensorus.com](mailto:lianwuzhou@wtsensorus.com)

Korean Company  
Korea Wotian Technology Co., Ltd.  
Sales Manager: Yinji An  
MP: 0086- 13478122009  
E-mail: [anyinji@wtsensorus.com](mailto:anyinji@wtsensorus.com)